

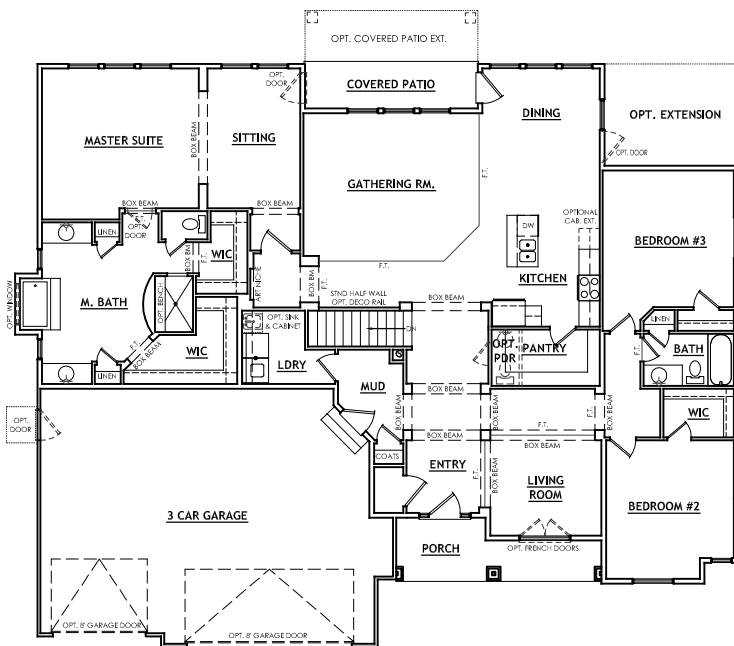
DREXEL PRAIRIE - BASEMENT - 2020



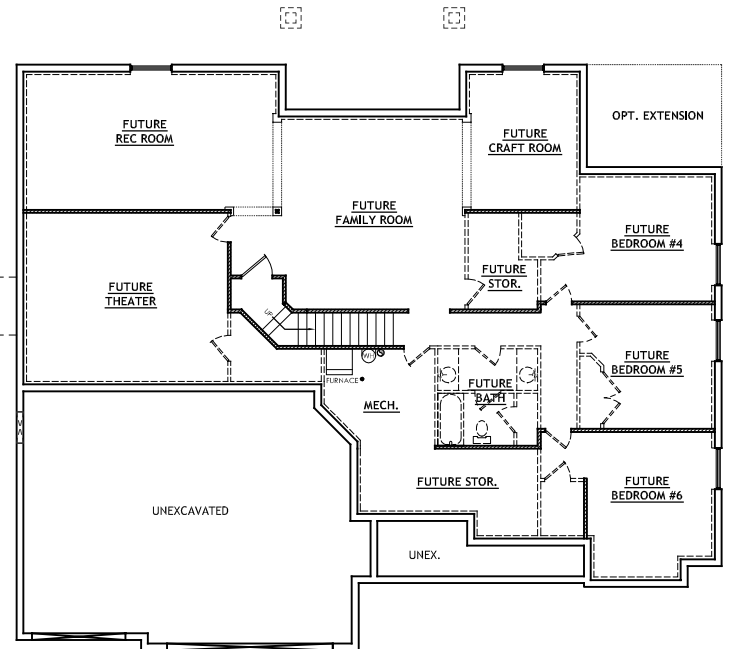
SQUARE FOOTAGE TOTAL: 5019 • FINISHED: 2514 • UNFINISHED: 2505
DIMENSION WIDTH 70'-2" • DEPTH 57'-6"



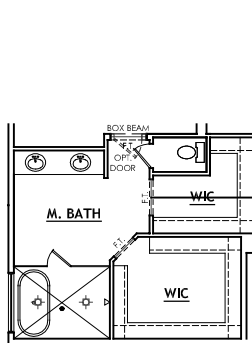
FRONT ELEVATION



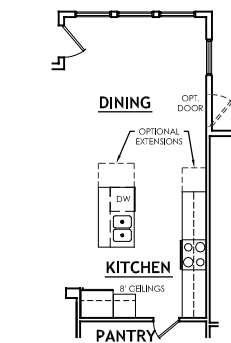
MAIN LEVEL (OPT. 9' CEILINGS)



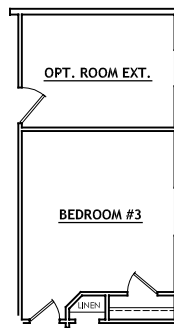
BASEMENT LEVEL (OPT. 9' WALLS)



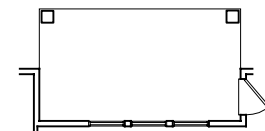
OPT. GRAND BATH



OPT. GRAND KITCHEN



OPT. ROOM EXT.



OPT. 5' CVRD PATIO EXT.